

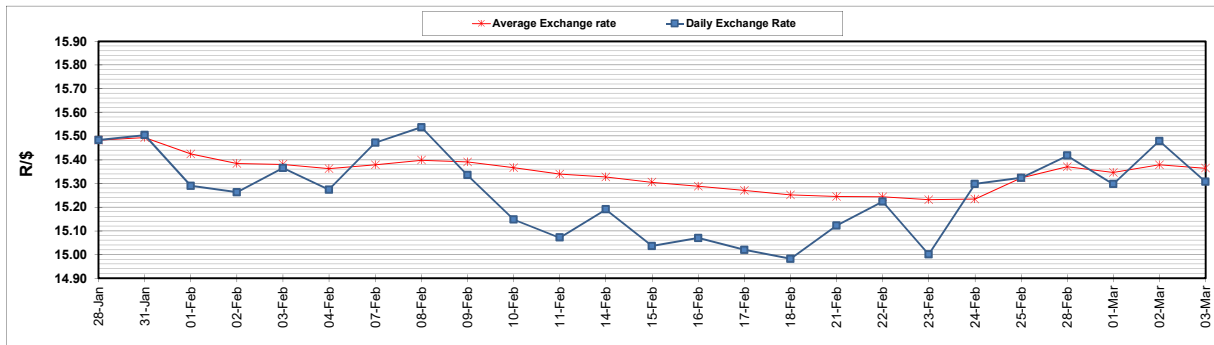
	PETROL 95 ULP	PETROL 93 ULP & LRP	DIESEL 0.05%	DIESEL 0.005%	ILL. PAR.
GAUTENG PUMP PRICE (SA c/l) AS FROM 02/03/2022	2,160.000	2,135.000	-	-	-
WHOLESALE PRICE (SA c/l) AS FROM 02/03/2022	-	-	1,948.880	1,955.280	1,318.688
SINGLE NATIONAL MAXIMUM RETAIL PRICE	-	-	-	-	1,690.000
BASIC FUEL PRICE - 03/03/2022 (SA c/l)	1,310.176	1,291.888	1,383.797	1,398.891	1,315.261
PRESS RELEASE CONTRIBUTION TO BFP 02/03/2022 - 03/03/2022 (SA c/l)	1,100.270	1,085.270	1,107.630	1,114.030	1,097.128
UNIT OVER/(UNDER) RECOVERY - 03/03/2022 (SA c/l)	(209.906)	(206.618)	(276.167)	(284.861)	(218.133)
AVERAGE BASIC FUEL PRICE 25/02/2022 - 03/03/2022	1,213.594	1,194.975	1,245.309	1,254.812	1,214.012
AVERAGE UNIT OVER/(UNDER) RECOVERY 25/02/2022 - 03/03/2022	(191.708)	(188.089)	(215.079)	(220.582)	(189.484)

### ANALYSIS MOVEMENT OF AVERAGE OVER/(UNDER) RECOVERY

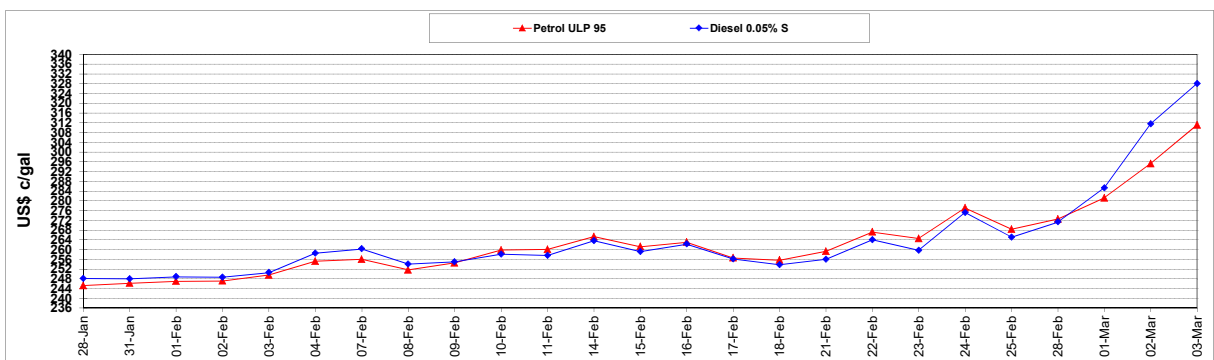
	PETROL 95	PETROL 93	DIESEL 0.05%	DIESEL 0.005%	ILL. PAR.
- MOVEMENT IN INTERNATIONAL PRODUCT PRICES	(181.394)	(177.934)	(204.496)	(209.917)	(179.166)
- MOVEMENT IN EXCHANGE RATE	(10.314)	(10.156)	(10.583)	(10.664)	(10.317)
AVERAGE UNIT OVER/(UNDER) RECOVERY 25/02/2022 - 03/03/2022	(191.708)	(188.089)	(215.079)	(220.582)	(189.484)

### R/\$ EXCHANGE RATE - (R/\$15.3068 - 03/03/2022)

#### EXCHANGE RATE USED IN BASIC FUEL PRICE



#### INTERNATIONAL PRODUCT PRICES OF BASKET USED IN BASIC FUEL PRICE



#### BASIC FUEL PRICE IN SA CENTS PER LITRE

